

Tonemapped results (exposure compensation -3,0,3,6):



Aggressive tree compression in  $\log(\text{RGB})$  space (input/output/diff/tree) and remaining residuals encoded in a low dynamic range DXT-compressed texture:



size of uncompressed image 3158028 bytes (96 bpp)

size of tree 22211 bytes

size of dictionary 10656 bytes

**Total 32867 bytes**

size of detail layer 131584 bytes

**Total bpp 4.9991**

$\log_2(\text{R})$  MSE = 0.001815 RMS = 0.042598

$\log_2(\text{G})$  MSE = 0.002385 RMS = 0.048832

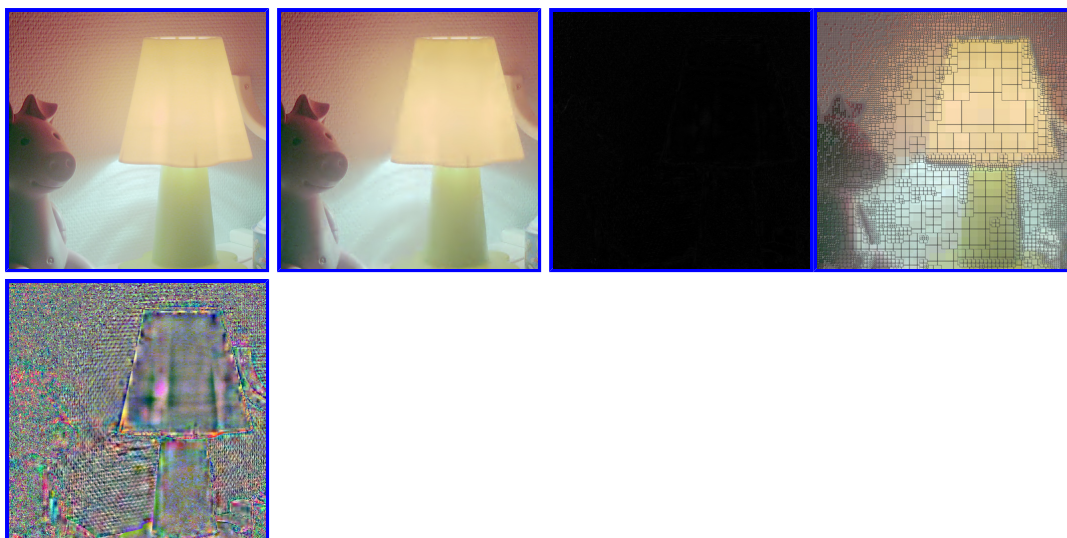
$\log_2(\text{B})$  MSE = 0.001997 RMS = 0.044683

$\log_2(\text{RGB})$  MSE = 0.002065 RMS = 0.045445

Tonemapped results (exposure compensation -3,0,3,6):



Aggressive tree compression in  $\log(\text{RGB})$  space (input/output/diff/tree) and remaining residuals encoded in a low dynamic range DXT-compressed texture:



size of uncompressed image 3158028 bytes (96 bpp)

size of tree 22300 bytes

size of dictionary 10656 bytes

**Total 32956 bytes**

size of detail layer 131584 bytes

**Total bpp 5.0018**

$\log_2(R)$  MSE = 0.001040 RMS = 0.032245

$\log_2(G)$  MSE = 0.002130 RMS = 0.046151

$\log_2(B)$  MSE = 0.003732 RMS = 0.061092

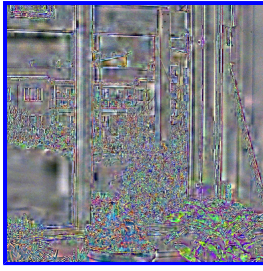
$\log_2(RGB)$  MSE = 0.002301 RMS = 0.047965

Tonemapped results (exposure compensation -3,0,3,6):



Aggressive tree compression in  $\log(RGB)$  space (input/output/diff/tree) and remaining residuals encoded in a low dynamic range DXT-compressed texture:





size of uncompressed image 3158028 bytes (96 bpp)

size of tree 21070 bytes

size of dictionary 10656 bytes

**Total 31726 bytes**

size of detail layer 131584 bytes

**Total bpp 4.96441**

$\log_2(R)$  MSE = 0.002694 RMS = 0.051906

$\log_2(G)$  MSE = 0.003800 RMS = 0.061647

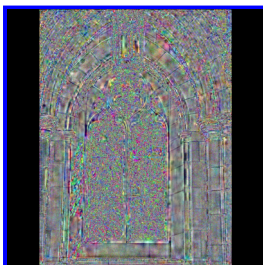
$\log_2(B)$  MSE = 0.004384 RMS = 0.066214

$\log_2(RGB)$  MSE = 0.003626 RMS = 0.060219

Tonemapped results (exposure compensation -3,0,3,6):



Aggressive tree compression in  $\log(RGB)$  space (input/output/diff/tree) and remaining residuals encoded in a low dynamic range DXT-compressed texture:



size of uncompressed image 12607500 bytes (96 bpp)

size of tree 90985 bytes

size of dictionary 12192 bytes

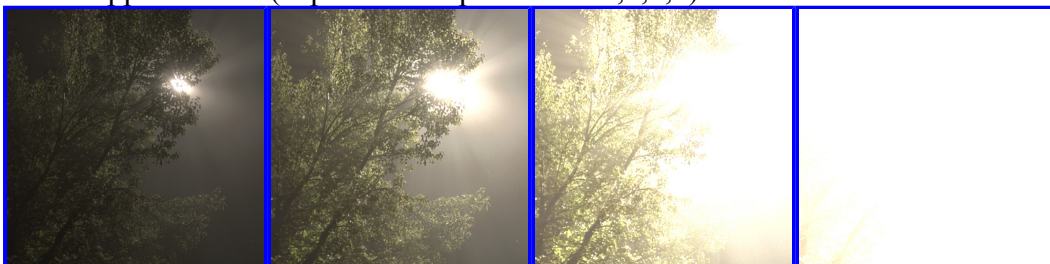
**Total 103177 bytes**

size of detail layer            392320 bytes  
**Total bpp**                    **5.05196**

$\log_2(R)$  MSE = 0.002626 RMS = 0.051246  
 $\log_2(G)$  MSE = 0.001591 RMS = 0.039885  
 $\log_2(B)$  MSE = 0.001498 RMS = 0.038698  
 $\log_2(RGB)$  MSE = 0.001905 RMS = 0.043644

---

Tonemapped results (exposure compensation -3,0,3,6):



Aggressive tree compression in  $\log(RGB)$  space (input/output/diff/tree) and remaining residuals encoded in a low dynamic range DXT-compressed texture:



size of uncompressed image 3158028 bytes (96 bpp)

size of tree                    20674 bytes  
size of dictionary            10656 bytes  
**Total**                        **31330 bytes**  
size of detail layer           131584 bytes  
**Total bpp**                    **4.95238**

$\log_2(R)$  MSE = 0.014354 RMS = 0.119810  
 $\log_2(G)$  MSE = 0.016533 RMS = 0.128580  
 $\log_2(B)$  MSE = 0.015860 RMS = 0.125936  
 $\log_2(RGB)$  MSE = 0.015582 RMS = 0.124829

---

Tonemapped results (exposure compensation -3,0,3,6):



Aggressive tree compression in  $\log(\text{RGB})$  space (input/output/diff/tree) and remaining residuals encoded in a low dynamic range DXT-compressed texture:



size of uncompressed image 3158028 bytes (96 bpp)

size of tree 20414 bytes

size of dictionary 10656 bytes

**Total 31070 bytes**

size of detail layer 131584 bytes

**Total bpp 4.94447**

$\log_2(\text{R})$  MSE = 0.003039 RMS = 0.055127

$\log_2(\text{G})$  MSE = 0.006254 RMS = 0.079085

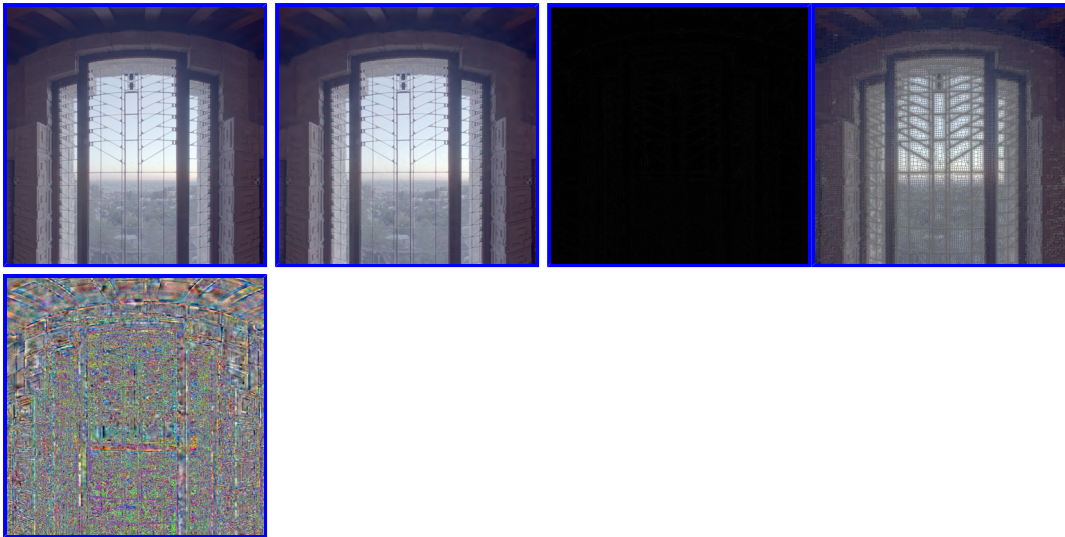
$\log_2(\text{B})$  MSE = 0.007726 RMS = 0.087899

$\log_2(\text{RGB})$  MSE = 0.005673 RMS = 0.075321

Tonemapped results (exposure compensation -3,0,3,6):



Aggressive tree compression in  $\log(\text{RGB})$  space (input/output/diff/tree) and remaining residuals encoded in a low dynamic range DXT-compressed texture:



size of uncompressed image 12607500 bytes (96 bpp)

size of tree 123656 bytes

size of dictionary 12192 bytes

**Total 135848 bytes**

size of detail layer 525312 bytes

**Total bpp 5.03441**

$\log_2(R)$  MSE = 0.004032 RMS = 0.063496

$\log_2(G)$  MSE = 0.003766 RMS = 0.061365

$\log_2(B)$  MSE = 0.001232 RMS = 0.035098

$\log_2(RGB)$  MSE = 0.003010 RMS = 0.054861

Compressed data (input,output,difference,tree):



size of uncompressed image 789507 bytes (24 bpp)

size of tree 56507 bytes

size of dictionary 10656 bytes

**Total 67163 bytes**

**Total bpp 2.04167**

R MSE = 9.377791 RMS = 3.062318 PSNR = 38.409798

G MSE = 8.983387 RMS = 2.997230 PSNR = 38.596405

B MSE = 9.279368 RMS = 3.046206 PSNR = 38.455620

avg MSE = 9.213516 RMS = 3.035378 PSNR = 38.486549