



CCM - The CORBA Component Model

Edward Cobb

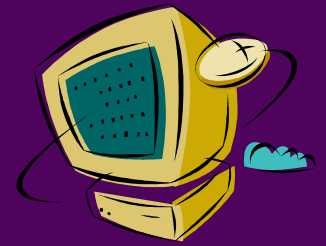
BEA Systems

ed.cobb@beasys.com

September 27, 1999

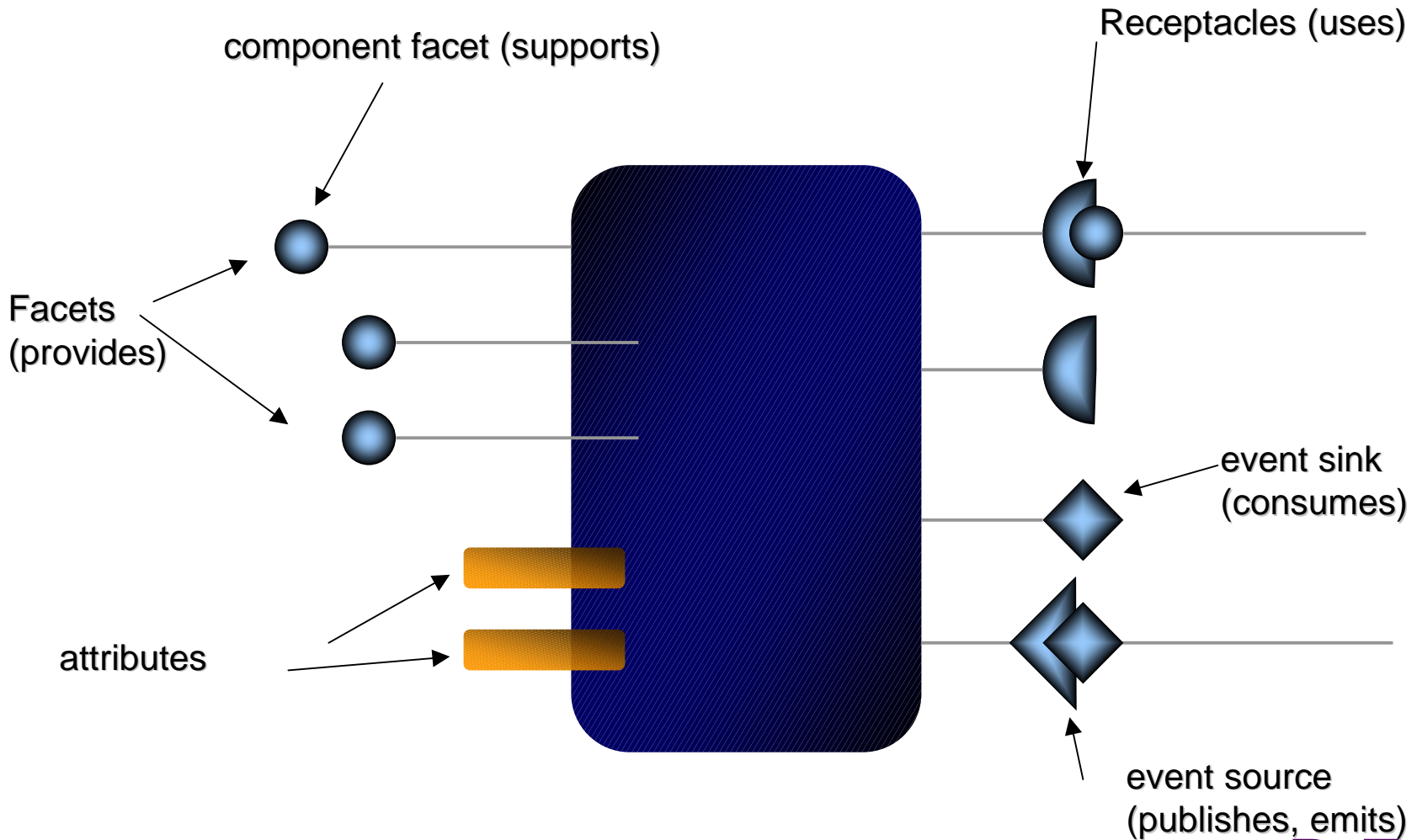
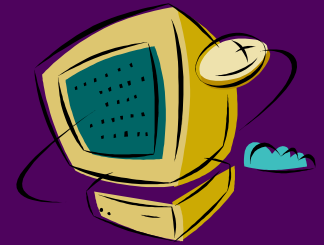


What is CORBA Components?

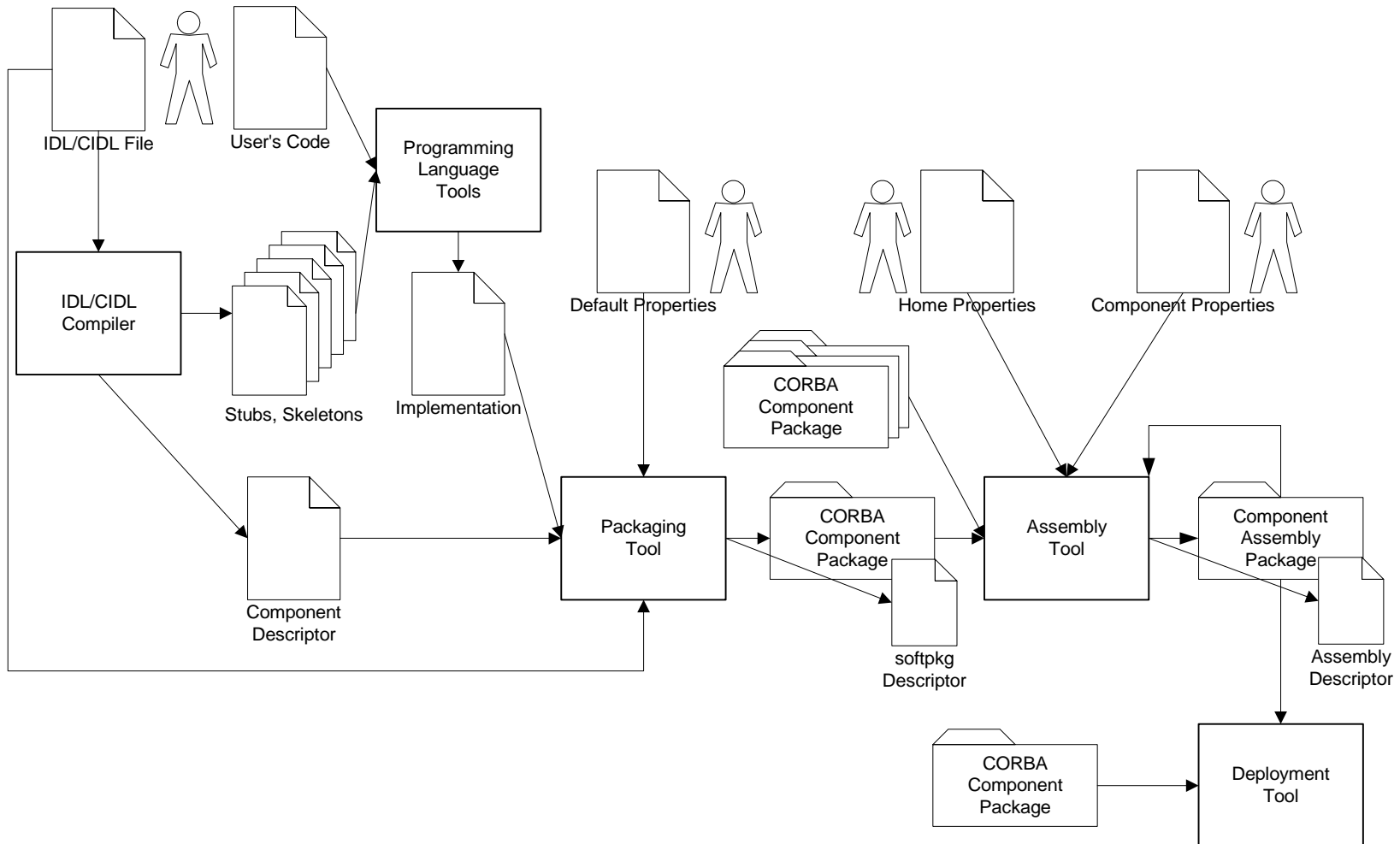
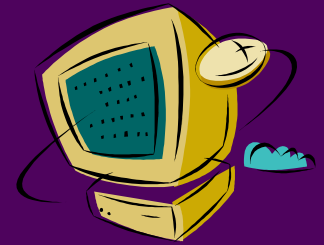


- A server-side component model for building and deploying CORBA applications
 - An architecture for defining server components and their interactions
 - A packaging technology for deploying binary, multi-lingual, executables
 - A container framework for injecting security, transactions, events, and persistence
 - A CORBA container for Enterprise JavaBeans

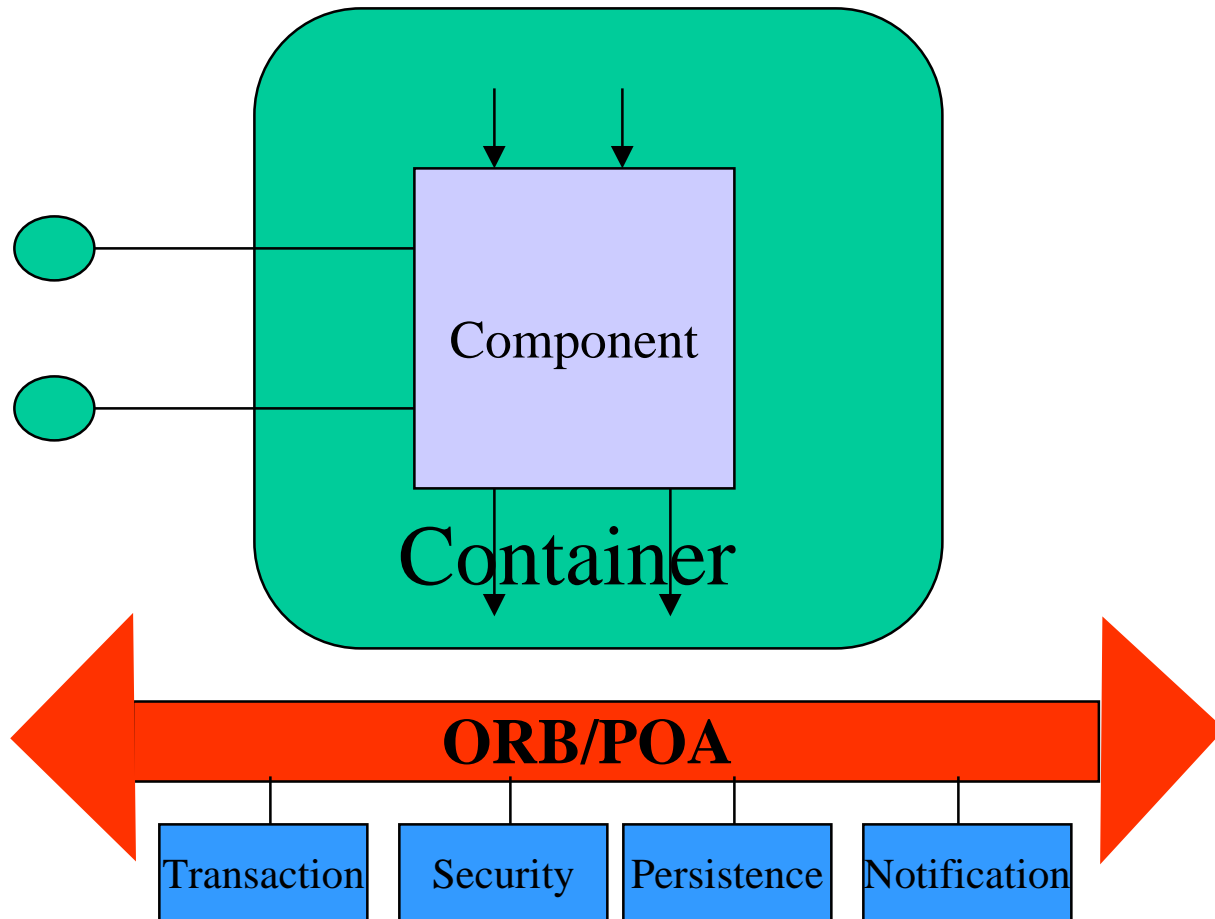
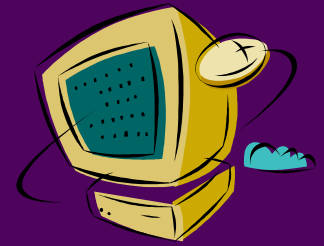
CCM Abstract Model



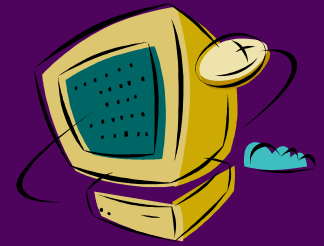
Packaging and Deployment



CCM Container Framework

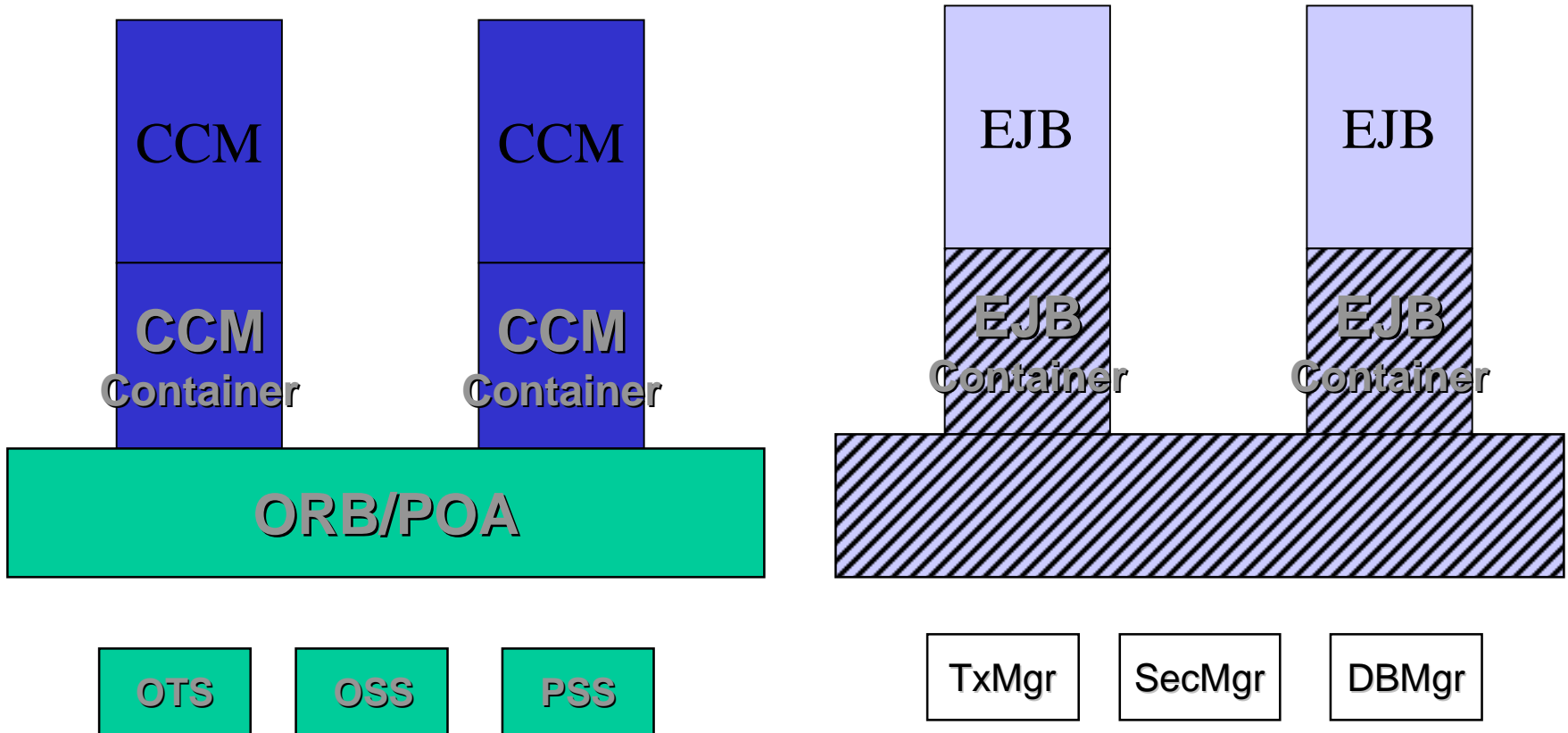
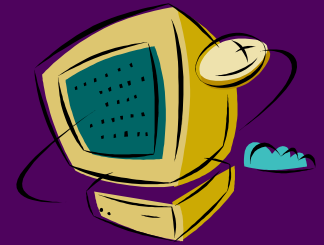


Component Categories

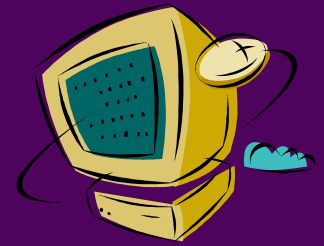


- Service
 - model stateless business process
 - like stateless EJB session beans
- Session
 - model stateless business processes
 - like stateful EJB session beans
- Process
 - model stateful business processes
 - container or self-managed persistence
- Entity
 - model stateful business entities
 - container or self-managed persistence
 - like EJB entity beans

CORBA Components and EJB



CCM Strengths



- Multiple Programming Languages
- EJB Integration
- Industry Standard
- Multi-Vendor Support
- Based on existing products
 - BEA WebLogic Enterprise
 - IBM Websphere
 - Multiple EJB Implementations