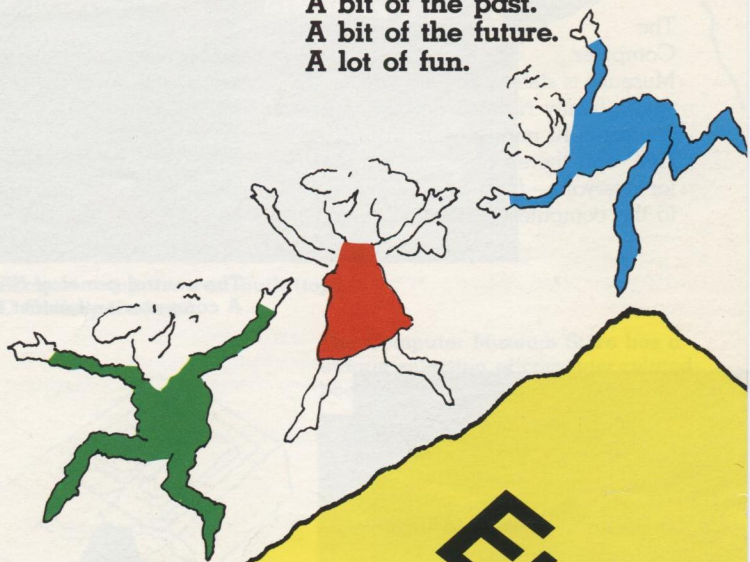


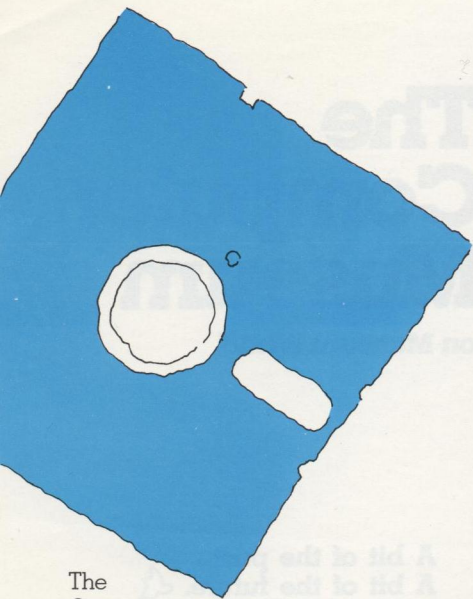
The Computer Museum

Downtown Boston on Museum Wharf

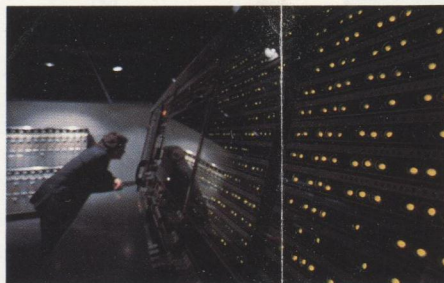
A bit of the past.
A bit of the future.
A lot of fun.



Enter



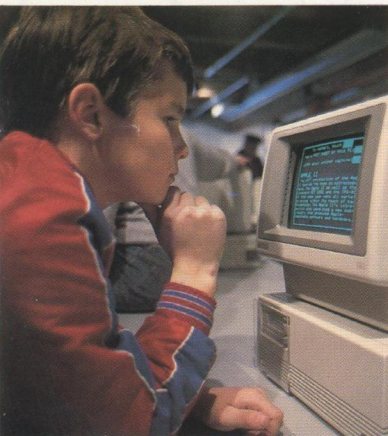
The Computer Museum is state-of-the-art fun for the whole family right in downtown Boston. It's just a 10 minute walk from Faneuil Hall, and there's plenty to see and do for everyone—from the computer expert to the computer curious.



- In its more than half an acre of exhibits you can:
- "Paint" a picture, create your own melody, even program a computer to say your name.
 - Change the computer picture of yourself, design a car, or create a fractal snowflake.
 - Journey through computer history—from the largest ever built to today's desk-top micros.
 - Discover the latest in computer animation.
 - Fly your own plane on a flight-simulating computer.

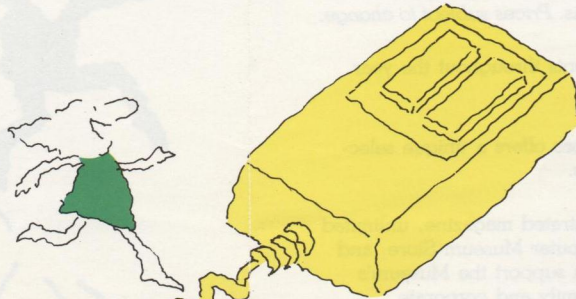


The control panel of SAGE, the largest computer ever built (top).
A computer enthusiast in the PC Gallery (bottom).



Get in touch with the past, present and future of computers—with a visit to the world's only computer museum.

**NO
EXPERIENCE
NECESSARY!**

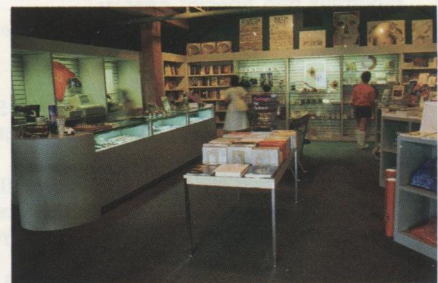


The Computer Museum.

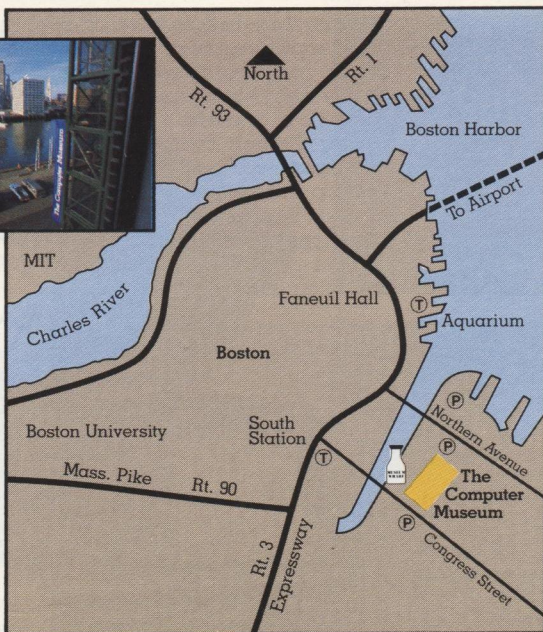
A bit of the past.
A bit of the future.
A lot of fun.

Photography: Bill Gallery

The Computer Museum Store has a unique selection of computer-related books, gift items and mementos.



Learning is fun for visitors using personal computers in the PC Gallery.



Telephone:

Call our talking computer for more information: (617) 423-6758.
 The Computer Museum Offices: (617) 426-2800.

Open Hours:

Summer: Open daily 10-6, Fridays 10-9. *Winter:* Open Tuesday through Sunday 10-6, Fridays 10-9. Closed Mondays except holidays and during Boston school vacation weeks. Closed New Years Day, Thanksgiving and Christmas. *Hours subject to change.*

Admission:

Adults \$4.00; Students and seniors \$3.00; free for Museum members. Special rates are available by advance reservation for groups of ten or more. Call (617) 426-2800 to make reservations. *Prices subject to change.*

Programs and Special Events:

The Museum hosts a variety of talks and events throughout the year. Call or write for more information.

The Computer Museum Store:

Open during regular Museum hours, the Store offers a unique selection of books, educational materials and gifts.

Join The Computer Museum!

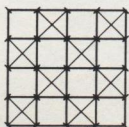
Museum members receive our quarterly illustrated magazine, unlimited free admission, a 10% discount in The Computer Museum Store, and invitations to members-only events. Plus, you support the Museum's ongoing educational activities. Individual, family and corporate memberships are available. Call (617) 426-2800 for more information.

Directions:

Follow the Museum Wharf signs displaying a giant milk bottle, our landmark.

By Subway: Take the MBTA Red Line to South Station.

By Car: *From North:* Expressway (Rte. 3) south to Exit 23 (High and Congress Streets); third left onto Congress Street and across bridge. *From South:* Expressway (Rte. 3) north to Atlantic & Northern Avenues Exit; immediate right over Northern Ave. Bridge. *From West:* Mass. Pike (Rte. 90) to Expressway north (Rte. 3) to Atlantic Ave. Exit; right over Northern Ave. Bridge.



**The Computer Museum
 Museum Wharf
 300 Congress Street
 Boston, MA 02210**