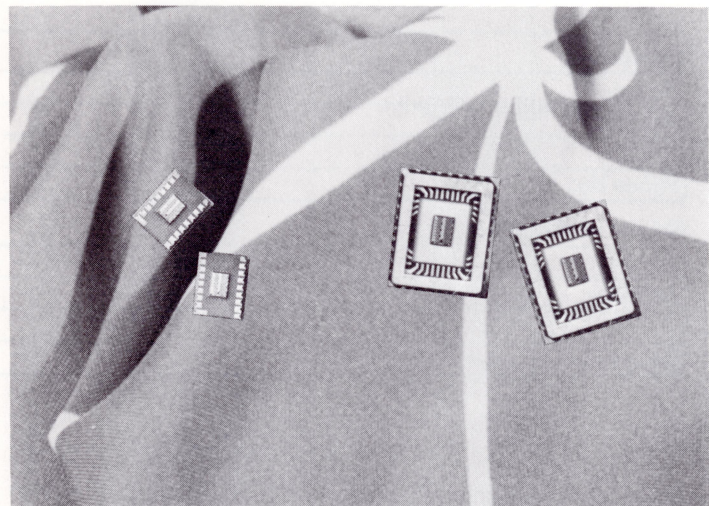
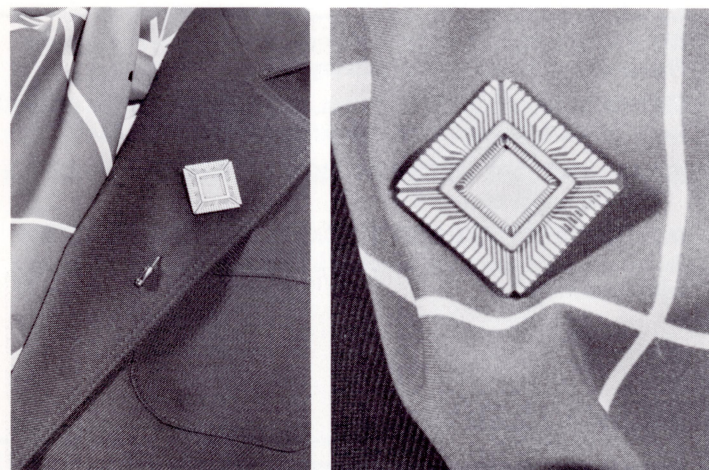


Expressly for "The Computer"—defined in the nineteen thirties as a girl who carried out calculations on a Monroe or Friden.



**Tiny Chip Post Earrings.**  $\frac{5}{16} \times \frac{1}{4}$ " ceramic chip carriers truly give the impression of the computer "on your ear." 24K gold plated edges on 14K gold filled posts. Pierced ears only.  
Order: TIEAR \$11.95 (members \$10.75)

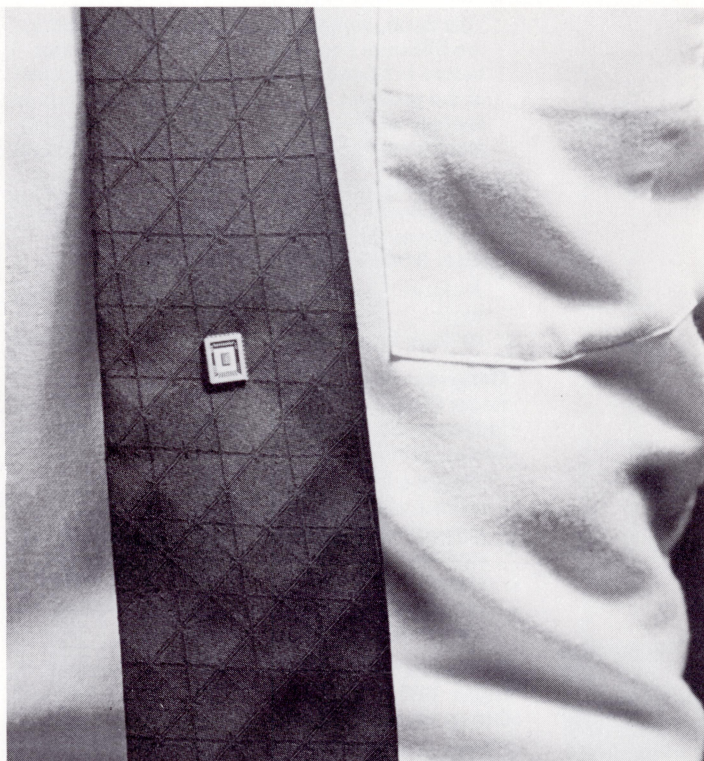
**Chip Carrier Post Earrings.** 24K gold plated,  $\frac{1}{2} \times \frac{5}{8}$ " ceramic chip carriers with an IC Center on 14K gold filled posts. Pierced ears only.  
Order: CHEAR \$15.95 (Members \$14.35)



**Core Plane Scarf.** The 27" square polyester scarf has the core memory pattern silk-screened in white on a grey background.  
Order: SCA83 \$16.50 (Members \$15.00)

**Chip Carrier Pin.** One inch square, this 24K gold plated chip carrier is available as both a bar pin and a stick pin.  
Order: BRPIN \$17.95 (members \$16.15) or STPIN \$17.95 (members \$16.15)

For The Well-Dressed (male-gender) Computer Engineer, Scientist, Historian, Programmer, Marketeer, Salesman, Hacker, User, . . .

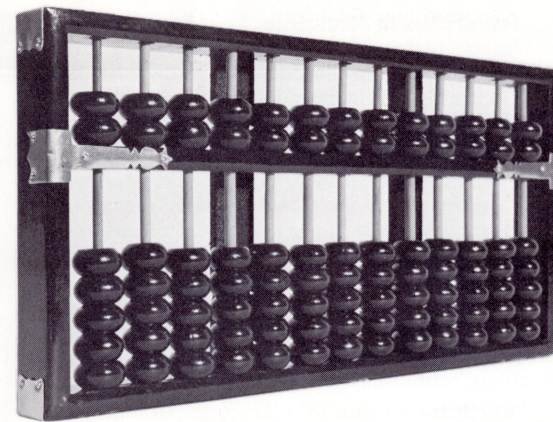
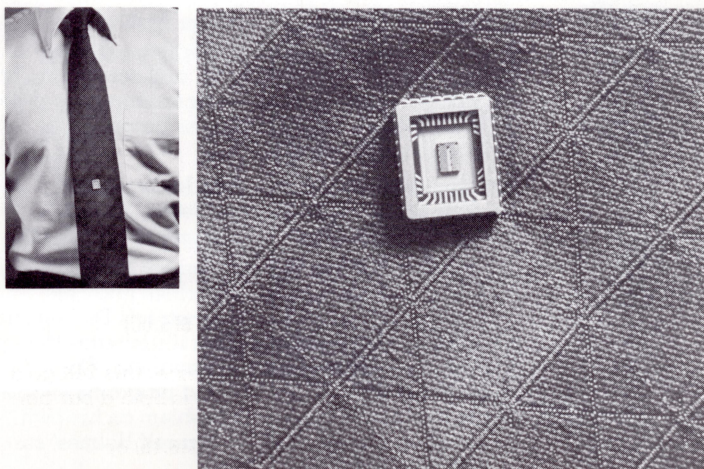


The latest in software . . .

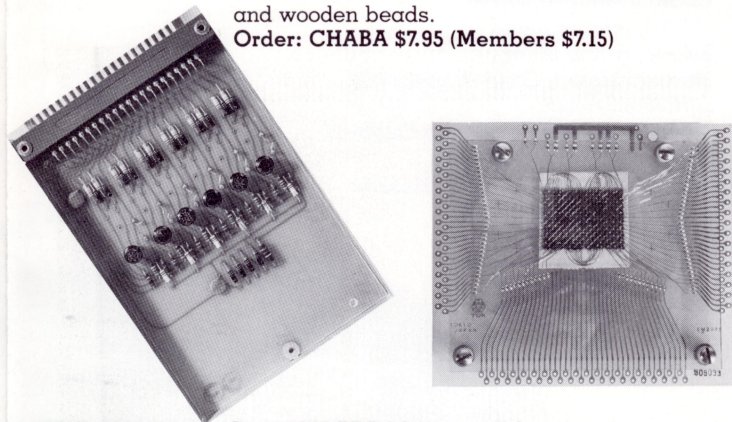
**Core Memory Tie.** Maroon core memory pattern woven on a navy blue background. Fully lined polyester/silk blend tie with standard 3" width.  
Order: TIE83 \$16.50 (Members \$15.00)

And the latest in hardware . . .

**Chip Tie Tack.**  $\frac{1}{2} \times \frac{5}{8}$ " 24K gold plated ceramic chip carrier with an IC center.  
Order: TITAC \$9.95 (members \$9.00)



**Abacus** and users manual, "Fundamental operations in bead arithmetic or How to use a Chinese Abacus." Classic eleven column abacus in a 13" x 6" black wooden frame with bamboo bars and wooden beads.  
Order: CHABA \$7.95 (Members \$7.15)



**PDP-1 Module.** Circa 1963 PDP-1 logic module in excellent condition. This 5" x 7" board with its discrete transistors and resistors in shades of blues and rusts makes an interesting conversation piece, and provides a useful reminder of computer components.  
Order: PDP1M \$5.95 (members \$5.35)

**Core Plane.** TDK electronics 18 x 24 bit plane mounted on a printed circuit board covered by plexiglass. This 4" x 4.5" plane clearly illustrates the technology of core memories.  
Order: COREP \$4.95 (Members \$4.45)

The Computer Museum **Flea Market.** A number of items have been donated to the Museum that are already in our collection. These are made available for sale at the store. These include secondary memory disks, early books on computing and calculating, slide rules, delay lines, calculators, typewriters, old manuals, and other antiques of the rapidly evolving industry.

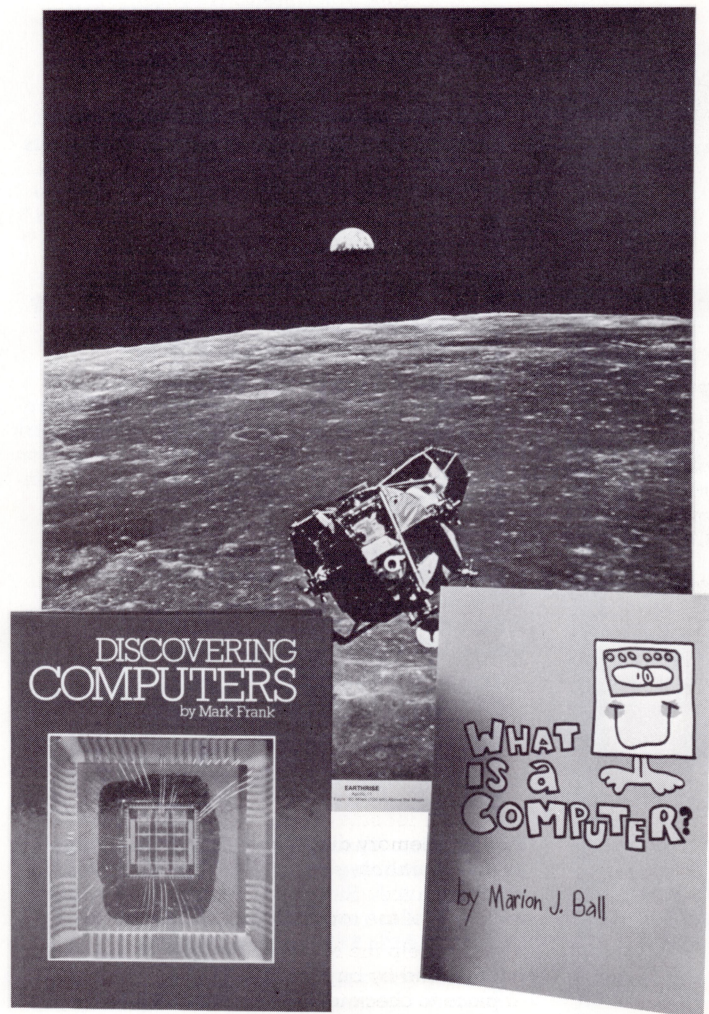
You can help the Museum by donating to the flea market and by buying from it. The order form has a place to check to receive the current listing of available items, and we'd be delighted to accept whatever treasures with which you are willing to part. Your donations are tax-deductible!

Expressly for Children

**What is a Computer?** by Marion Ball is a delightfully illustrated book for the primary school age. It's also an introduction to computer history with explanations of cards and core memory. Soft cover, 92 pages.  
Order: BAL72 \$10.00 (members \$9.00)

**Discovering Computers** by Mark Frank. The best we've found for junior high level with no background in computers, math or science. Hard cover, 96 pages with 104 color illustrations and photographs.  
Order: FRA80 \$9.95 (members \$9.00)

**Earthrise Poster.** 23" x 29" color photograph of the Apollo 11 lunar module sixty miles above the moon with the earth rising in the distance above the lunar landscape.  
Order: Earth \$4.00 (members \$3.60)



# The Computer Museum

## 1983 Spring-Summer Catalog

One Iron Way  
Marlboro, MA 01752

NOV 21 1983

Memorabilia  
Posters  
Gifts  
Computer Museum Exclusives  
Paperback Books  
Expressly for Children

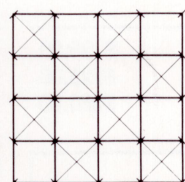
Applicable until October 1, 1983



Computer Museum **T-Shirts** of Ada and Pascal—especially for history buffs and programmers. Heather grey, high quality Hanes 75% cotton and 25% polyester shirts with black and white silk screen portraits of either Ada or Pascal. Machine wash and dry but allow for slight shrinkage.

Adult sizes only  
Small (34-36)  
Medium (38-40)  
Large (42-44)  
X-large (46-48)

For Pascal order: PATEE \$7.95 (Members \$7.15)  
For Ada order: ADTEE \$7.95 (Members \$7.15)



# The Computer Museum

One Iron Way  
Marlboro, Massachusetts 01752

