

SONY

Reader

Quick Start Guide

PRS-500
Portable Reader System

© 2006 Sony Corporation Printed in Japan 2-674-363-02(1)

About the serial number

The serial number provided for this unit is required for customer registration. The number is on a label on the back of the unit. Do not remove the label.

Owner's Record

The model and serial numbers are located on the back of the unit. Record them in the space provided below. Refer to these numbers in the spaces whenever you call upon your Sony dealer regarding this product.

Model No. _____
Serial No. _____

On Copyrights

The contents of each book pre-installed on this product are copyrighted works, edited with the cooperation of the publisher and editor hereto mentioned. Copyright laws prohibit copying the data of this product or the contents of this manual (illustrations, related documents, etc.) in whole or in part without the permission of the copyright holder. Additionally, use of the data of this product or the contents of this manual is not allowed without Sony's permission except for personal use.

- SONY and the SONY logo are trademarks of Sony Corporation.
- BBeB, BBeB Book, and their logos are trademarks of Sony Corporation.
- Reader is trademark of Sony Corporation.
- CONNECT Reader and the CONNECT Reader logo are trademarks or registered trademarks of Sony Corporation.
- "Memory Stick," "Memory Stick Duo," "Memory Stick PRO," "MagicGate Memory Stick," and their logos are trademarks of Sony Corporation.
- Bitstream is a registered trademark, and Dutch, Font Fusion, and Swiss are trademarks, of Bitstream Inc.
- Microsoft, Windows, Windows NT, and Windows Media are trademarks or registered trademarks of Microsoft Corporation in the United States and/or other countries.
- Adobe, Adobe Reader and Adobe PDF are trademarks or registered trademarks of Adobe Systems Incorporated in the United States and/or other countries.
- MPEG Layer-3 audio coding technology and patents licensed from Fraunhofer IIS and Thomson.

All other system names and product names appearing in this document are generally the registered trademarks or trademarks of their respective manufacturers. Further, the trademark ™ and registered trademark ® symbols are not indicated throughout this document.

Program ©2006 Sony Corporation
Documentation ©2006 Sony Corporation



Printed on 100% recycled paper using
VOC (Volatile Organic Compound)-
free vegetable oil based ink.

What You Can Do with Sony Reader

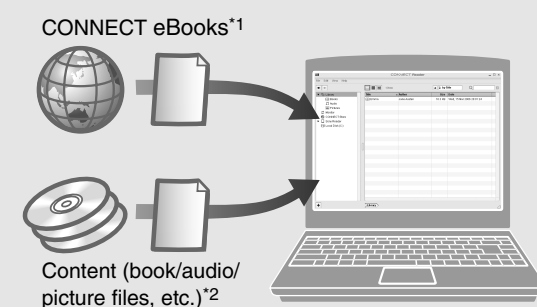
Thank you for purchasing this Sony Portable Reader System PRS-500. Read through this Quick Start Guide to prepare Sony Reader for use. Once initial preparation is complete, you can transfer content from your computer to Sony Reader to take anywhere you wish.

Getting Started

- Read this manual for initial preparation.
- Charge Sony Reader.
- Install CONNECT Reader to your computer.

Importing

Download eBooks from CONNECT eBooks on your computer.



- *1 Online eBook store
- *2 Content that you already have can also be transferred. For details on content type compatible with Sony Reader, refer to the Operation Guide (PDF).

Transferring

Transfer content from your computer to Sony Reader using CONNECT Reader.



Reading/Playing/Viewing

Enjoy the content on Sony Reader.



Getting Started

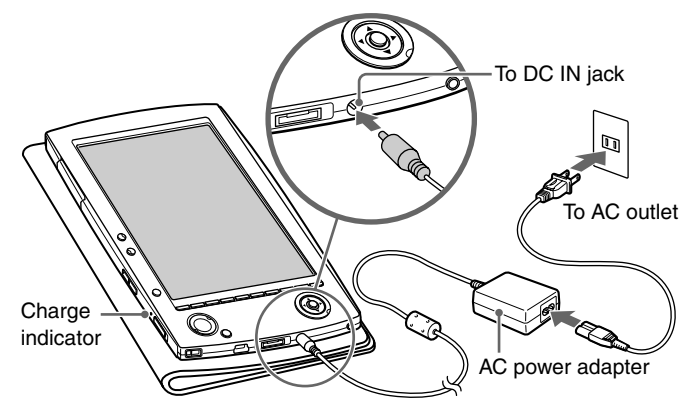
1 Checking the package contents

Sony Reader comes installed with a built-in rechargeable battery.

- Sony Reader (with Soft cover) (1)
- AC power cord (1)
- AC power adapter (1)
- USB cable (1)
- CD-ROM* (1)
 - CONNECT Reader software
 - Operation Guide (PDF)
 - Sample content
- * Do not attempt to play this CD-ROM in an audio CD player.
- Quick Start Guide (this manual) (1)

2 Charging

First, charge the Sony Reader battery by connecting the supplied AC power adapter and AC power cord, as battery power may not be sufficient immediately after purchase. The Charge indicator lights up in red while charging, and goes off when charging is complete.



Notes

- Do not use an AC power adapter other than the one supplied.
- Connect the AC power adapter to an easily accessible AC outlet. Should you notice an abnormality in the AC power adapter, disconnect it from the AC outlet.

Hint

- Sony Reader can also be charged via USB connection to your computer.

3 Installing CONNECT Reader

1 Turn on the computer and start Windows.

Log on using an account with administrator privileges and connect to the Internet with your computer.

2 Insert the supplied CD-ROM into your computer's drive.

Install Wizard screen appears.

3 Follow the on-screen instructions to install.

If the installation is not successful, refer to "When installation is not successful - Q&A."

To start CONNECT Reader

- 1 Click the Start menu, then select "All programs" – "CONNECT Reader" – "CONNECT Reader."

4 Customer registration

It is recommended that you perform customer registration by registering your contact information, which enables Sony to send you information regarding technical support, software updates, etc. ID* will be provided after registration.

* ID is your "master key" to log into various Sony group web sites using a single ID and password.

- 1 Click "Access to customer registration web site (<http://www.sony.com/productregistration>)" to perform customer registration.

System requirements

The following are requirements to use CONNECT Reader.

OS	Microsoft Windows XP Home Edition, Windows XP Professional, Windows XP Media Center Edition, Windows XP Media Center Edition 2004, Windows XP Media Center Edition 2005
CPU	800MHz Celeron class processor or better
RAM	128 MB or more
Free space on hard disc	20 MB or more Depending on the content amount, more space may be required.
Monitor	High Color or more, 1024 x 768 dots or more (True Color, 1280 x 1024 dots, or more recommended)
Other devices	CD-ROM drive, USB port, pointing device such as mouse or track pad

- Internet connection (broadband recommended, some fees may apply) is also required on your computer.
- This software is not supported by the following environments:
 - An operating system other than those included above
 - Personally built computer or operating system
 - Upgraded manufacturer-installed operating system
 - Multi-boot environment
 - Multi-monitor environment
 - Macintosh

When installation is not successful - Q&A

Q1 Does your computer meet system requirements?

- A1 Check that your computer meets the system requirements listed above.

Q2 Were you logged on as an "Administrator," did you close all running software programs before beginning the installation?

- A2 Log on as "Administrator."
Close all running software programs, including background programs such as virus-protection software.

Q3 The set-up program does not start automatically.

- A3 If the set-up program does not start automatically when you insert the CD-ROM, click "Start" on the Windows taskbar, click "My Computer," and then double-click the optical disc drive icon to start the program.

Q4 Is the progress bar in the installation window moving, and the access lamp of the CD drive flashing?

- A4 When the bar is moving and the lamp is flashing, the installation is still in progress. Please wait for the installation to finish.

If the solutions listed here do not resolve the issue, refer to "Support" on the reverse side of the sheet.

Hint

- For the latest information on CONNECT Reader and to download any software updates, visit the web site:
<http://www.sony.com/reader>

Continued overleaf →

How to Use

5 Importing eBooks from CONNECT eBooks to CONNECT Reader

You can purchase (download) eBooks from the online eBook store "CONNECT eBooks" to your computer.

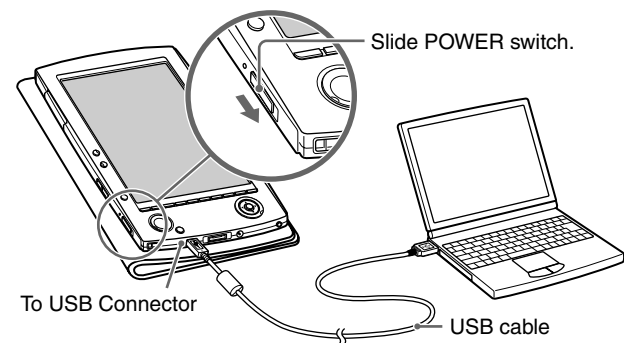
Hint

- The following explains how to import/transfer/read eBooks. For details on other content formats supported by Sony Reader, refer to the Operation Guide (PDF).

Note

- To purchase (download) eBooks, you need to prepare an Internet-accessible environment on your computer.

- 1 Turn on Sony Reader, then connect it to your computer using the USB cable.



Hint

- When you first connect Sony Reader to your computer, the date and time setting of Sony Reader is automatically synchronized to your computer clock.

- 2 Click the Start menu, then select "All programs" – "CONNECT Reader" – "CONNECT Reader" to start CONNECT Reader.

- 3 Click "eBook Store" in the Source view of CONNECT Reader.

The eBook Store page appears.

- 4 Follow the instructions in the store to authorize Sony Reader and your computer.

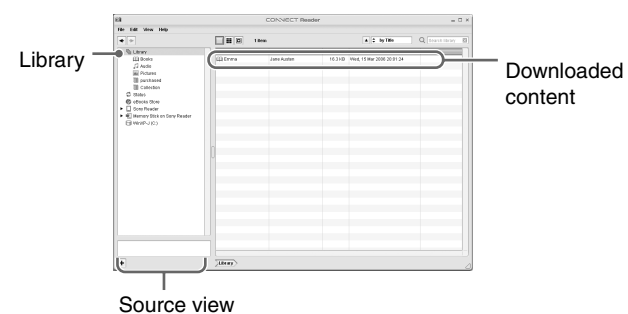
Authorization is required only on the first visit to CONNECT eBooks.

Note

- The above authorization is necessary to purchase (download) and read eBooks on CONNECT Reader or Sony Reader, as copyright protection is employed on eBooks.

- 5 Follow the instructions in the store to purchase (download).

Downloaded eBooks are automatically imported to "Library" in the Source view of CONNECT Reader.



Hint

- eBooks can be read on CONNECT Reader using your computer. For details on CONNECT Reader operations, refer to the CONNECT Reader Help.

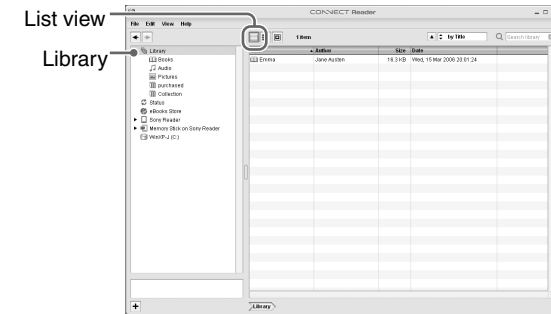
6 Transferring eBooks from your computer to Sony Reader

- 1 Check that CONNECT Reader is running and that Sony Reader is connected to your computer using the USB cable.

"Sony Reader" appears in the Source view of CONNECT Reader.

- 2 Click "Library" in the Source view, then click (List view).

The View area is switched to the List view and all the content in Library is listed.



Hints

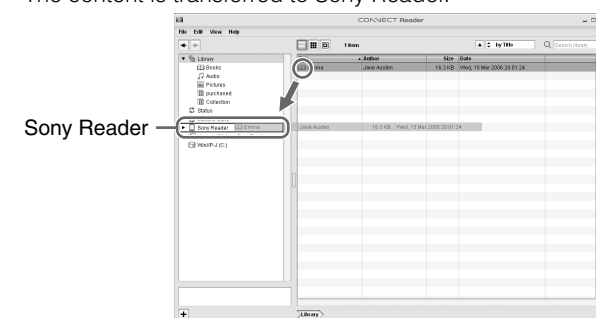
- When you click "Books," "Audio" or "Pictures" in the Source view, only their respective content types are displayed.
- When you click (Thumbnail view), content can be displayed as thumbnails.

- 3 Select the content you want to transfer from the list.

To select multiple content, click the content while holding down the Ctrl key.

- 4 Drag the content from the list to "Sony Reader" in the Source view.

The content is transferred to Sony Reader.



Notes

- Do not disconnect the USB cable from Sony Reader while data is being transferred.
- Do not leave Sony Reader connected for extended periods to a notebook computer that is not connected to AC power, because Sony Reader may discharge the computer's battery.
- If the computer enters a power saving mode, such as the system suspend, sleep or hibernation while Sony Reader is connected to the computer directly, the Sony Reader battery is not charged. Instead, Sony Reader continues to draw power from the battery, discharging it.

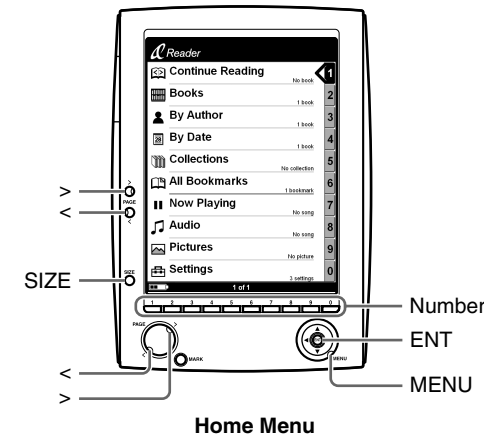
On transferring via a memory card

- To transfer eBooks to a memory card on Sony Reader, insert the memory card in Sony Reader, then follow the above steps (except drag and drop the content on "Memory Stick on Sony Reader/SD Card on Sony Reader" in step 4). For details, refer to "Transferring content via a memory card" in the Operation Guide.

- With a memory card slot on your computer or a memory card reader, you can also transfer content directly to the memory card and then insert it in Sony Reader.

If a memory card is inserted in your computer or a memory card reader, the memory card icon appears in the Source view. Follow the above steps (except drag and drop the content on "Memory Stick on PC/SD Card on PC/Memory Card on PC" in step 4) to transfer to a memory card.

7 Reading eBooks on Sony Reader



- 1 In the Home menu, press ENT up (▲) or down (▼) to select "Books," then press down on ENT.

The Book list appears.



Hint

- You can easily select a desired item by pressing the same number button as indicated on the number tab.

- 2 Press ENT up (▲) or down (▼) to select the desired book from the list, then press down on ENT.

The Option menu appears.

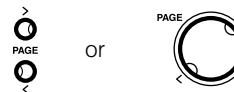


- 3 Press ENT up (▲) or down (▼) to select how to open the book, then press down on ENT.



- 4 Press > to proceed to the next page.

To return to the previous page, press <.

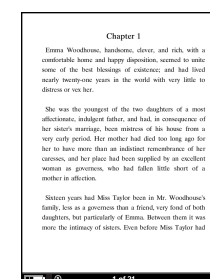
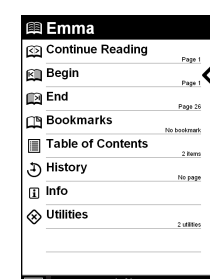
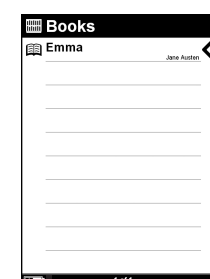
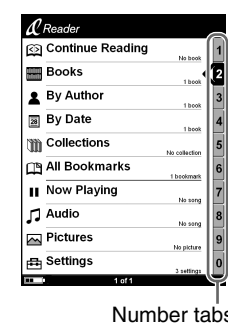


- 5 Press SIZE if you want to zoom in the page.

The page can be magnified in 3 steps.

To restore the original scale, press SIZE repeatedly.

To close the book
Press MENU.



SIZE



Read to learn about advanced features

Included with Sony Reader is this Quick Start Guide and the PDF-format Operation Guide. Additionally, after installing the supplied CONNECT Reader, you can refer to the Help within CONNECT Reader.

Operation Guide (PDF)

Contains instructions for advanced features of Sony Reader and troubleshooting information.

Browsing the Operation Guide on your computer



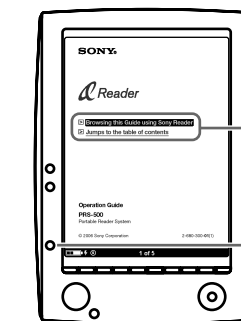
The PDF file of the Operation Guide is stored on the supplied CD-ROM. Click the Start menu in the bottom left of the Desktop, then select "All programs" – "CONNECT Reader" – "PRS-500 Operation Guide" to start Adobe Acrobat Reader and open the Operation Guide.

For details on how to use the Adobe Acrobat Reader, refer to the Adobe Acrobat Reader Help.

Hint

- To view the Operation Guide, you should have installed either Adobe Reader 5.0 or later. Adobe Reader can be downloaded for free from the Adobe website (www.adobe.com).

Browsing the Operation Guide using Sony Reader



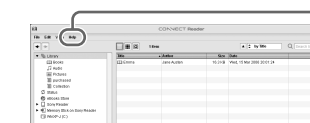
The PDF file of the Operation Guide is transferred to Sony Reader. From the Home menu, select "Books" – "Operation Guide" from the Book list.

Hints

- A [X] mark on this Guide indicates a link. Press ▲/▼ to select the desired link, then press ENT to jump to the linked page.
- To zoom in a page, press SIZE.

CONNECT Reader Help

Contains instructions for CONNECT Reader operations.



Click "Help" – "CONNECT Reader Help."

Support

If you encounter an issue, try the following.

- If you cannot install CONNECT Reader
Refer to "When installation is not successful – Q&A" in this manual.
- For other issues
Refer to "Troubleshooting" in the Operation Guide.

If the issue persists

Visit the support site (<http://www.sony.com/readersupport>).

If the issue still persists

Contact Sony Portable Reader System Support Center.
Phone number : 1-866-962-7669
For details, refer to "Other Information" in the Operation Guide.